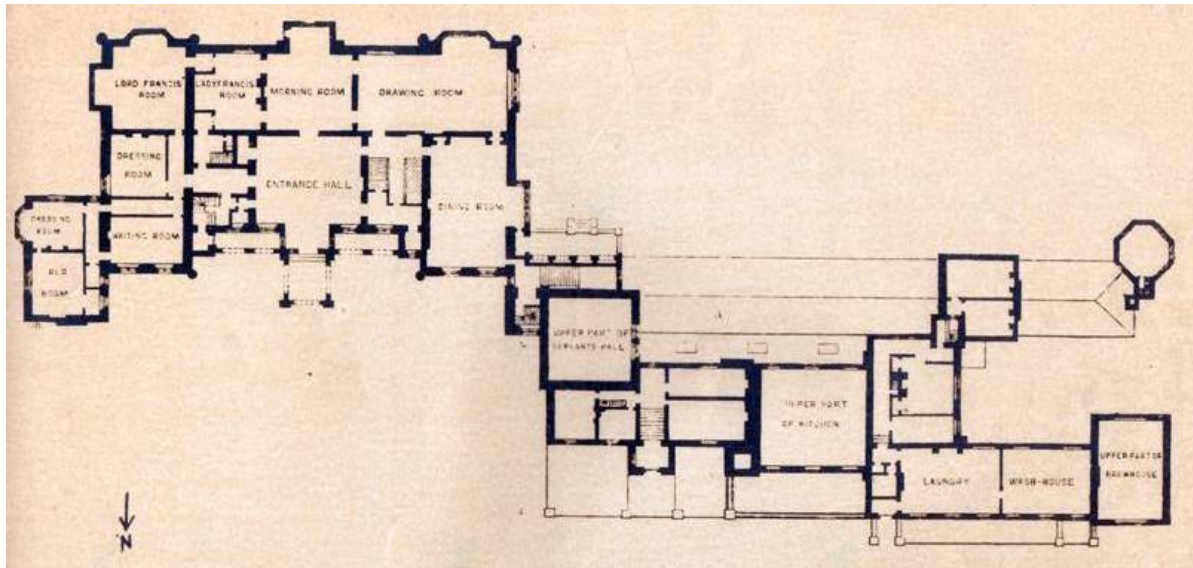




The Hall was built for the Earls of Ellesmere in the 1840s. It was called the New Hall to distinguish it from the Old Hall and Brick Hall which were close by, but built much earlier. The New Hall was built from stone and cost the equivalent of over £6 million.





Ground Floor plan from the journal, *The Builder*.

The Hall had over 70 rooms and lots of chimneys. On the plan above you can see the servant's wing on the left-hand side of the main building.

Rooms on the plan:

Lord Francis' Room

Lady Francis' Room

Morning Room

Drawing Room

Dining Room,

Entrance Hall

Dressing Room

Waiting Room

Bed Room

Upper Part of Servant's Hall

Upper Part of Kitchen

Laundry

Wash House

Upper Part of Brew House